

RECEIVED

United States Department of the Interior
National Park Service

AUG 21 2003

National Register of Historic Places Registration Form

Ala. Historical Commission

This form is for use in nominating or requesting determinations for individual properties and districts. See instructions in *How to Complete the National Register of Historic Places Registration Form* (National Register Bulletin 16A). Complete each item by marking "x" in the appropriate box or by entering the information requested. If any item does not apply to the property being documented, enter "N/A" for "not applicable." For functions, architectural classification, materials, and areas of significance, enter only categories and subcategories from the instructions. Place additional entries and narrative items on continuation sheets (NPS Form 10-900a). Use a typewriter, word processor, or computer, to complete all items.

1. Name of Property

historic name Davis C. Cooper House

other name/site number _____

2. Location

street & number 301 Main Street not for publication N/A

city or town Oxford vicinity N/A

state Alabama code AL county Calhoun code 015 zip code 36203

3. State/Federal Agency Certification

As the designated authority under the National Historic Preservation Act of 1966, as amended, I hereby certify that this nomination request for determination of eligibility meets the documentation standards for registering properties in the National Register of Historic Places and meets the procedural and professional requirements set forth in 36 CFR Part 60. In my opinion, the property meets does not meet the National Register Criteria. I recommend that this property be considered significant nationally statewide locally. (See continuation sheet for additional comments.)

Signature of certifying official/Title _____ Date _____

State or Federal agency and bureau _____

In my opinion, the property meets does not meet the National Register criteria. (See continuation sheet for additional comments.)

Signature of commenting or other official _____ Date _____

State or Federal agency and bureau _____

4. National Park Service Certification

I, hereby, certify that this property is:

entered in the National Register.
 See continuation sheet.

determined eligible for the National Register
 See continuation sheet.

determined not eligible for the National Register.

removed from the National Register.

other, (explain:) _____

Signature of the Keeper

Date of Action

8. Statement of Significance

Applicable National Register Criteria

(Mark "x" in one or more boxes for the criteria qualifying the property for National Register listing.)

- Property is associated with events that have made a significant contribution to the broad patterns of our history.
Property is associated with the lives of persons significant in our past.
Property embodies the distinctive characteristics of a type, period, or method of construction or represents the work of a master, or possesses high artistic values, or represents a significant and distinguishable entity whose components lack individual distinction.
Property has yielded, or is likely to yield, information important in prehistory or history.

Criteria Considerations

(Mark "X" in all the boxes that apply.)

Property is:

- owned by a religious institution or used for religious purposes.
removed from its original location.
a birthplace or a grave.
a cemetery.
a reconstructed building, object, or structure.
a commemorative property.
less than 50 years of age or achieved significance within the past 50 years.

Narrative Statement of Significance

(Explain the significance of the property on one or more continuation sheets.)

9. Major Bibliographic References

Bibliography

(Cite the books, articles, and other sources used in preparing this form on one or more continuation sheets.)

Previous documentation on file (NPS):

- preliminary determination of individual listing (36 CFR 67) has been requested.
previously listed in the National Register
previously determined eligible by the National Register
designated a National Historic Landmark recorded by Historic American Buildings Survey #
recorded by Historic American Engineering Record #

Areas of Significance

(Enter categories from instructions)

Politics/Government

Commerce

Architecture

Period of Significance

1911-1943

Significant dates

1911, circa 1925

Significant Person

(Complete if Criterion B is marked above)

Cooper, Davis Clay

Cultural Affiliation

N/A

Architect/Builder

Primary Location of Additional Data:

- State Historic Preservation Office
Other State agency
Federal agency
Local government
University
Other

Name of repository:

10. Geographic Data

Acreage of Property _____ 1 ac. _____

UTM References

(Place additional UTM references on a continuation sheet)

1	1 6	6 0 8 1 5 9	3 7 2 0 1 0 6
	Zone	Easting	Northing
2			

3			
	Zone	Easting	Northing
4			

See Continuation Sheet

Verbal Boundary Description

(Describe the boundaries of the property on a continuation sheet.)

Boundary Justification

(Explain why the boundaries were selected on a continuation sheet.)

11. Form Prepared By

name/title _____ David B. Schneider, Consultant _____

organization _____ Schneider Historic Preservation, LLC _____ date _____ 23 July 2003 _____

street & number _____ 411 E. 6th Street _____ telephone _____ 256-310-6320 _____

city or town _____ Anniston _____ state _____ AL _____ zip code _____ 36207 _____

Additional Documentation

Submit the following items with the completed form:

Continuation Sheets

Maps

A **USGS** map (7.5 or 15 minute series) indicating the property's location.

A **sketch map** for historic districts and properties having large acreage or numerous resources.

Photographs

Representative **black and white** photographs of the property.

Additional items

(Check with the SHPO or FPO for any additional items)

Property Owner

(Complete this item at the request of the SHPO or FPO.)

name/title _____

street & number _____ telephone _____

city or town _____ state _____ zip code _____

Paperwork Reduction Act Statement: This information is being collected for applications to the National Register of Historic Places to nominate properties for listing or determine eligibility for listing, to list properties, and to amend existing listings. Response to this request is required to obtain a benefit in accordance with the National Historic Preservation Act, as amended (16 U.S.C. 470 et seq.).

Estimated Burden Statement: Public reporting burden for this form is estimated to average 18.1 hours per response including the time for reviewing instructions, gathering and maintaining data, and completing and reviewing the form. Direct comments regarding this burden estimate or any aspect of this form to the Chief, Administrative Services Division, National Park Service, P.O. Box 37127, Washington, DC 20013-7127; and the Office of Management and Budget, Paperwork Reductions Project (1024-0018), Washington, DC 20503.

United States Department of the Interior
National Park Service

**National Register of Historic Places
Continuation Sheet**

Section number 7 Page 1

Davis C. Cooper House
Calhoun County, AL

7. Narrative Description

The Davis C. Cooper House is located on the east side of Main Street in Oxford, Alabama with a street address of 301 Main Street. The property is bounded to the south by the property of the Oxford Baptist Church, to the east by a wooded area and adjacent residential development, and to the north and west by residential areas. The front portion of the site rises gently from the street to the rear of the house and then more steeply to the rear of the property. In addition to the house, the property retains three contributing resources: a recreation building, garage, and a gazebo. An additional frame shed is noncontributing.

The Cooper House is an irregular-shaped two-story frame dwelling with a truncated hipped composition shingle roof with exposed rafter ends. The house faces west and has a principal rectangular three by three bay two-story core. A one-story flat-roofed sunroom extends southward from the west bay of the south elevation. The two eastern bays of the south elevation extend one bay to the south of the core under an intersecting hipped roof. A two-story one by one bay wing with a hipped roof and a two story porch project to the east from the rear of the core and its extension. The western end of the north elevation has a wide projecting polygonal bay under an intersecting hipped roof.

The principal west facade is three bays wide and is clad with wood weatherboard siding with mitered corners. Exposed roof rafters are shaped. A central one-story gable front portico with paired wooden columns access the entrance which has a multi-light transom and sidelights. Each bay flanking the entrance has a tripartite grouped window within a molded surround. Each grouping has a central six over one light double hung sash window flanked by similar four over one windows. A smaller profile tripartite window grouping at the central bay of the upper level has a central double wood six-light casement window flanked by similar single windows. Double six over one windows are set within the outer bays. The west elevation of the sunroom is aligned with the principal facade and has an entablature supported by four sets of paired square wooden pilasters and enframed by weatherboard siding. French doors with transoms are set between each set of pilasters. A series of shaped rafter ends project above the entablature.

The three western bays of the south elevation represent the core of the house and the eastern bay its rear wing. The west bay recedes slightly from the remainder of the elevation and its first floor level is obscured by the sunroom. A single six over one light double hung sash window is located at the second level of the west bay and is flanked to the east by two bays of similar double windows. The upper level of the rear wing has a smaller profile four-unit grouped window with six-light casements. A similar single window is located at the east bay of first floor level and is flanked to the west by two double windows that are similar to those at the upper level. The south elevation of the sunroom is similar to its facade but with a central French door flanked by fixed window panels with transoms. The entrance has a round canvas awning.

x

See continuation sheet 7-2

United States Department of the Interior
National Park Service
National Register of Historic Places
Continuation Sheet

Section number 7 Page 2

Davis C. Cooper House
Calhoun County, AL

The southern bays of the eastern elevation consist of the rear wall of the wing and a two-story porch. The first level of the porch is enclosed and the upper level is screened. The two northern bays have single six over one windows at the second level and are separated by an exterior brick chimney. A double casement window at the north bay of first floor is flanked to the south by a one-story hipped enclosure. The two eastern bays of the north elevation have triple casement windows at each level. A wide full-height polygonal bay to the west has single six over one windows at each level of its angled side walls and fixed ten-light windows at its center wall.

A brick walk leads from the street to a set of brick stairs accessing the principal entrance. A brick retaining wall encloses a deck that extends along the facade to the south of the entrance. Formal landscaping includes a variety of mature trees and ornamental shrubs.

The interior plan of the house is irregular. Rooms are grouped around a central open well stairhall with a monumental staircase. The principal parlor is located to the west of the stairhall along the front of the house. The large rectangular room has an off-center fireplace along its east wall. French doors with transoms provide light and access between the parlor and the sunroom to the south, the stairhall, and a secondary parlor and "plant room" to the north. The plant room is a narrow room located along the front of the house and has a fixed planter box along its north wall and a clay tile floor. The secondary parlor has a polygonal north wall and a fireplace along its east wall. A kitchen, family dining room, and bathroom are located east of the secondary parlor. A small hallway to the rear of the stairhall opens to a secondary rear hall to the north, a bathroom to the east, and a small bedroom to the south. A large den is located to the west of the bedroom immediately south of the stairhall. The room has an off-center fireplace along its west wall. A second kitchen is located at the southeast (rear) corner of the house. A stair to the north of the kitchen along the rear wall provides access to the upper level screened porch. The second floor level has a series of bedrooms grouped around the large open central stairhall. Walls and ceilings throughout the house are typically finished with plaster and floors are typically exposed wood except at bathrooms or as otherwise noted. Trim and mantelpieces include a mix of styles with simple Colonial Revival style elements found in the principal first floor spaces and late-Victorian elements found elsewhere.

The Davis C. Cooper House has seen very little alteration since it was remodeled to its present form circa 1925 and it retains integrity to that period. The overall condition of the building is good.

Recreation Building

The recreation building (circa 1911) is located on the hillside to the rear of the house and is a narrow one-story frame building with a front facing gable composition shingle roof. The building faces south, is clad with wood novelty siding, and has a full facade gable porch with wood posts. The principal facade has an entrance at its west bay and a single light window at its north bay. Similar windows are located in the four bays of its west elevation and three southern bays of its east elevation. The north bay of the east elevation is an entrance. The north wall has no openings. The interior contains a single open room

United States Department of the Interior
National Park Service

**National Register of Historic Places
Continuation Sheet**

Section number 7 Page 3

Davis C. Cooper House
Calhoun County, AL

with exposed roof and sidewall framing and a wood floor. A freestanding wood box ball alley remains as the principal historic feature of the room. The recreation building has seen little alteration and is in fair condition.

Garage

The garage (circa 1911) is located to the south of the house and is a rectangular one-story brick building with a hipped pressed metal shingle roof. The building rests on a patterned concrete block foundation. The original garage door opening at the south elevation has been altered and now encloses a garage door to the west and a pedestrian entrance to the east. The east elevation has a single one-light window. Remaining elevations have no openings. The garage retains its overall integrity and is in good condition.

Gazebo

The gazebo (circa 1925) is located to the southeast of the garage and is an open polygonal structure with a polygonal composition shingle roof. The roof is supported by a series of log posts. The gazebo retains its overall integrity and is in good condition.

United States Department of the Interior
National Park ServiceNational Register of Historic Places
Continuation SheetSection number 8 Page 4Davis C. Cooper House
Calhoun County, AL

The Davis C. Cooper House is historically significant for its association with Davis C. Cooper, a prominent Oxford business and political leader, and architecturally as the only example of large scale Colonial revival residential architecture in the city of Oxford. Davis C. Cooper served as President of the Bank of Oxford (later the First National Bank of Oxford) for forty-five years and as Mayor of the City of Oxford for twenty years. In addition to numerous business interests, Cooper was active in local and state religious and civic affairs. Physical and documentary evidence indicates that the Davis C. Cooper House was constructed in 1911 and then greatly remodeled to its present form circa 1925. The house retains integrity from that period. The 1976 historic sites survey of Oxford refers to the house as "Oxford's most sophisticated example of Georgian Revival." The building's period of significance is from 1911 through 1943, the year of Cooper's death.

Historical Narrative

Davis Clay Cooper (22 May 1866-15 November 1943) was a prominent Calhoun County business and political leader. An editorial in the Anniston Star once noted that Cooper "extended his activities beyond the confines of Calhoun County and is regarded as one of the most substantial citizens of Alabama." On February 18, 1907, Cooper purchased a portion of lot #1 in block #8 in the town of Oxford from the Williams' estate of for \$600.¹ The 1908-1909 city directory records Cooper, his wife Annie, and son Davis Jr. residing at 301 Main Street. The Coopers acquired an adjacent parcel to the south of this lot "on which D.C. Cooper residence now stands" on June 25, 1912.²

Davis C. Cooper had a long and successful career and was noted for his business, civic, religious and political leadership. The youngest son of Charles J. and Harriett Johnson Cooper, Davis was born on a farm in what later became the city of Anniston. After graduating from Oxford College, Cooper started in business with his father Charles J. Cooper, a prominent local merchant and banker. D.C. Cooper became the first president of the Bank of Oxford, established in 1888, and was at the time the youngest person in Alabama to hold such a position.³ The bank was later reorganized as the First National Bank of Oxford and Cooper remained its president for forty-five years. He was instrumental in the development of Oxford Lake as a local resort area and was an organizer of the streetcar company that provided transportation to it and the nearby city of Anniston. In addition, Cooper was involved with the establishment and operation of the Blue Springs Cotton Mill in Oxford and the Oxford Oil Mill.⁴

The 1908-1909 city directory records Cooper as the President of the First National Bank, the secretary-treasurer and general manager of the Oxford Oil Company, and the proprietor of the Oxford Ginnery. Davis obtained the Nu-Grape Bottling Co. franchise for most of Calhoun County in 1922.⁵ In 1925, he established the Cooper and Sons Motor Company and by 1935 was listed as the manager of the Choccolocco Valley Warehouse Company.⁶ He was a founder of the Alabama Home Building and Loan Association and the Alabama Home Mortgage Company.

Cooper served on the city council of the town of Oxanna before it became part of the city of Anniston. He subsequently served on the city councils of Anniston and Oxford. He chaired the Oxford Board of

United States Department of the Interior
National Park Service
National Register of Historic Places
Continuation Sheet

Section number 8 Page 5

Davis C. Cooper House
Calhoun County, AL

Education for sixteen years. In 1910, Cooper was elected Mayor of Oxford, an office he held for two decades. Cooper also served as a member of the Democratic Executive Committee of Alabama.

Among his many civic activities, Cooper was the first director of the annual fair at Oxford Lake and was a prominent member of the Baptist Church. In addition to having served forty-four years as the moderator of the Calhoun County Baptist Association, Cooper also served thirty years as a member of the Alabama State Missions Board and as president of the Alabama Baptist Association. During this time, Cooper also served on the Board of Trustees for Howard College in Birmingham.

Cooper was also highly praised for his personal character. When the Bank of Oxford was forced to close during the Depression, Cooper and his family mortgaged all of their personal properties in order to insure that all the bank's depositors received their money.

Cooper married Annie Cunningham in June 1888 and the couple had the following children: Davis Clay, Jr., Annie A., Roberta, Dominique C., Eugene C., and Bessie Mae. The Coopers employed two servants at the property. One was a cook and the other was a driver, gardener, and butler.⁷ In addition to his home in Oxford, Cooper owned several farms. He operated a cotton gin and a grist mill on the Coldwater Farm along Coldwater Creek. He also owned the "Borders Place" in the Choccolocco Valley, "one of the oldest and best known farms in Calhoun County."⁸

Davis' daughter Annie continued to occupy the house at 301 Main Street after her parents deaths, her mother's occurring on December 31, 1934 and her father's on November 15, 1943. She listed her occupation as a nurseryman in the 1969 city directory.⁹ The house sat vacant from about 1970 until 1974, Annie having first relocated to a retirement home and then passing away on December 10, 1972. Her will devised the property to her nephew, William K. Weaver Jr., who subsequently sold it to Harvey F. Campbell, Jr. In 1978, Kent M. and Jan Smith purchased the property and resided there until 2002.

Architecture

The Davis C. Cooper House represents a good example of the Georgian Revival style and is the only large scale example of this design within the town of Oxford. While relatively subdued in its architectural features, the house has a symmetrical principal facade, accentuated front door with an entrance bay gable front portico supported by slender paired columns, double and triple windows, and hipped roof, all of which are common elements of the style. Examination of historic sites survey information compiled in 1979 noted no buildings in the town of a similar architectural style. The survey form completed for the house referred to it as "Oxford's most sophisticated example of Georgian Revival."

Local tradition has long held that the present Cooper House was constructed in 1911 and that date appears in several published sources. A 1905 Sanborn map indicates a one-story dwelling at approximately this location. Cooper acquired the property in 1907 and is recorded as living there by the

United States Department of the Interior
National Park ServiceNational Register of Historic Places
Continuation SheetSection number 8 Page 6Davis C. Cooper House
Calhoun County, AL

time the 1908-1908 city directory was compiled. A 1921 Sanborn map indicates a two story house of approximately the same size but in a different configuration from the present house. If the local tradition is correct, the house shown on the later Sanborn map replaced the earlier one-story house and was built for Cooper about 1911. A house of the same configuration as the present house is shown for the first time on a 1928 Sanborn map. There is conflicting documentary and physical evidence as to whether the present house represents a remodeling of the earlier house or a new house that replaced it. A direct comparison of the maps and overlaying the present plan on the 1921 map indicate distinct similarities. Notable among these similarities is the consistency in the overall dimensions of the house and between the size of the projecting bay at the north end of the facade shown on the 1924 map and the width of the present northwest room. Further evidence that the present house represents a remodeling of the earlier house is found in diversity of interior trim, which includes both Colonial Revival style elements and mantelpieces, molded trim and cornerblocks consistent with the earlier period. Most likely, the present house represents a substantial remodeling of the circa 1911 house that occurred circa 1925. Much of the exterior appearance of the house, its roof form, and its interior layout and the detailing of its principal parlor date from the remodeling.

In addition to the house, the site retains three additional historic resources. A small frame recreational building (circa 1925) to the rear of the house retains a rare box ball alley, a precursor to the modern bowling alley. The building was in use by at least 1919, when the Oxford Baptist Church held a social at "Cooper's Box Ball Alley."¹⁰ To the southeast of the house, a rustic gazebo is located in the garden and was constructed circa 1925. A brick garage (circa 1911) is located to the south of the house.

Notes: _____

¹ Calhoun County Probate Court, Deed Book 119, p. 211.

² Deed Book 161, p. 34.

³ "Davis Clay Cooper, 77, Dies At Oxford Home," Anniston Star, November 16, 1943, p. 1. .

⁴ Ibid.

⁵ "Coopers Have Big Holdings; Long Bankers," newspaper clipping, vertical files, Oxford Public Library.

⁶ Anniston City Directory, 1926, p. 97; 1935, n.p.

⁷ William K. Weaver, Jr., "Davis Clay Cooper, Sr., A Lay Leader Among Baptists in Alabama" (n.p.: By the author, n.d.), p. 3. Note: Weaver is the grandson of Davis C. Cooper, Sr.

⁸ Weaver, p. 5.

⁹ Anniston City Directory, 1969, p. 136.

¹⁰ Dorothy Clifton Bishop and William Sep Love, History of the First Baptist Church of Oxford, Alabama, 150 Years 1836-1986 (Oxford, AL: First Baptist Church of Oxford, 1985), p. 140.

United States Department of the Interior
National Park Service

**National Register of Historic Places
Continuation Sheet**

Section number 9 Page 7

Davis C. Cooper House
Calhoun County, AL

9. Major Bibliographic References

Alabama Blue Book and Social Register. Montgomery, AL: Blue Book Publishing Co., 1929.

Anniston, Alabama. Alabama Room, Anniston-Calhoun County Public Library.

_____. Calhoun County Probate Court. Deed Books.

_____. City Directories 1898-1980.

Bishop, Dorothy Clifton and William Sep Love. History of the First Baptist Church of Oxford, Alabama, 150 Years 1836-1986. Oxford, AL: First Baptist Church of Oxford, 1985.

"Coopers Have Big Holdings; Long Bankers." newspaper clipping, vertical files, Oxford Public Library.

"Davis Clay Cooper, 77, Dies At Oxford Home." Anniston Star, November 16, 1943, p. 1.

Oxford, Alabama. Historic Sites Survey Files. Oxford Public Library. Miscellaneous records include a survey form, historical research notes and copies of a property title abstract.

Sanborn Map Company. Insurance Maps of Oxford, Alabama. 1885, 1894, 1905, 1921, 1928

United States Census. 1920, 1930.

Weaver, William K., Jr. "Davis Clay Cooper, Sr., A Lay Leader Among Baptists in Alabama." n.p.: By the author, n.d. Note: Weaver is the grandson of Davis C. Cooper, Sr.

United States Department of the Interior
National Park Service

National Register of Historic Places Continuation Sheet

Section number 10 Page 8

Davis C. Cooper House
Calhoun County, AL

10. Geographic Data

Verbal Boundary Description

The nominated boundary includes the entire parcel recorded in the Assessor's Office for Calhoun County, Alabama as parcel number .

Boundary Justification

The boundary includes the entire current parcel only, which represent the total remaining acreage historically associated with the resource.

x

See continuation sheet 10-66

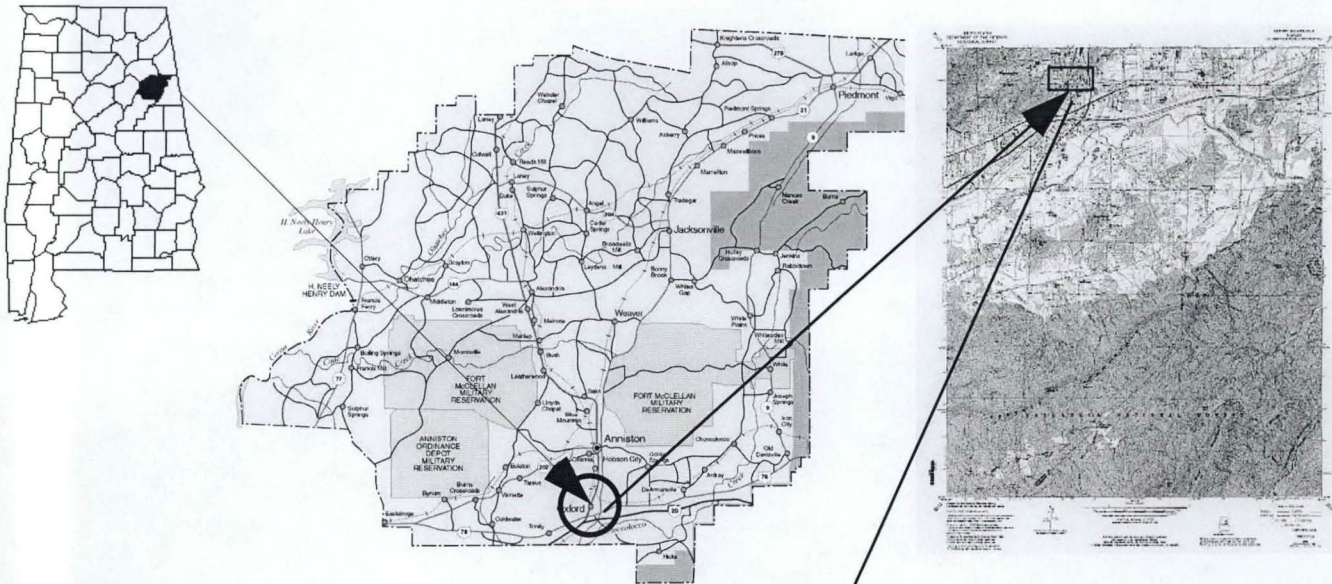
United States Department of the Interior
National Park Service

National Register of Historic Places Continuation Sheet

Accompanying Documentation, Continuation Sheet #1

Section number _____ Page _____

Davis C. Cooper House
Calhoun County, AL



USGS Quad:
Oxford



UTM: 16 / 608159 / 3720106

United States Department of the Interior
National Park Service

**National Register of Historic Places
Continuation Sheet**

Accompanying Documentation, Continuation Sheet #2

Section number _____ Page _____

Davis C. Cooper House
Calhoun County, AL

Photographs:

1. Davis C. Cooper House
2. Oxford, Calhoun County, Alabama
3. David B. Schneider
4. June 2003
5. 411 E. 6th St., Anniston AL 36207

6. Facade, camera facing E
7. Photo #1

6. Streetscape, camera facing NE
7. Photo #2

6. Oblique, camera facing NE
7. Photo #3

6. Oblique, camera facing SW
7. Photo #4

6. Parlor, camera facing SE
7. Photo #5

6. Recreation Building, camera facing NE
7. Photo #6

6. Garage, camera facing NW
7. Photo #7

6. Gazebo, camera facing SE
7. Photo #8

United States Department of the Interior
National Park Service

National Register of Historic Places Continuation Sheet

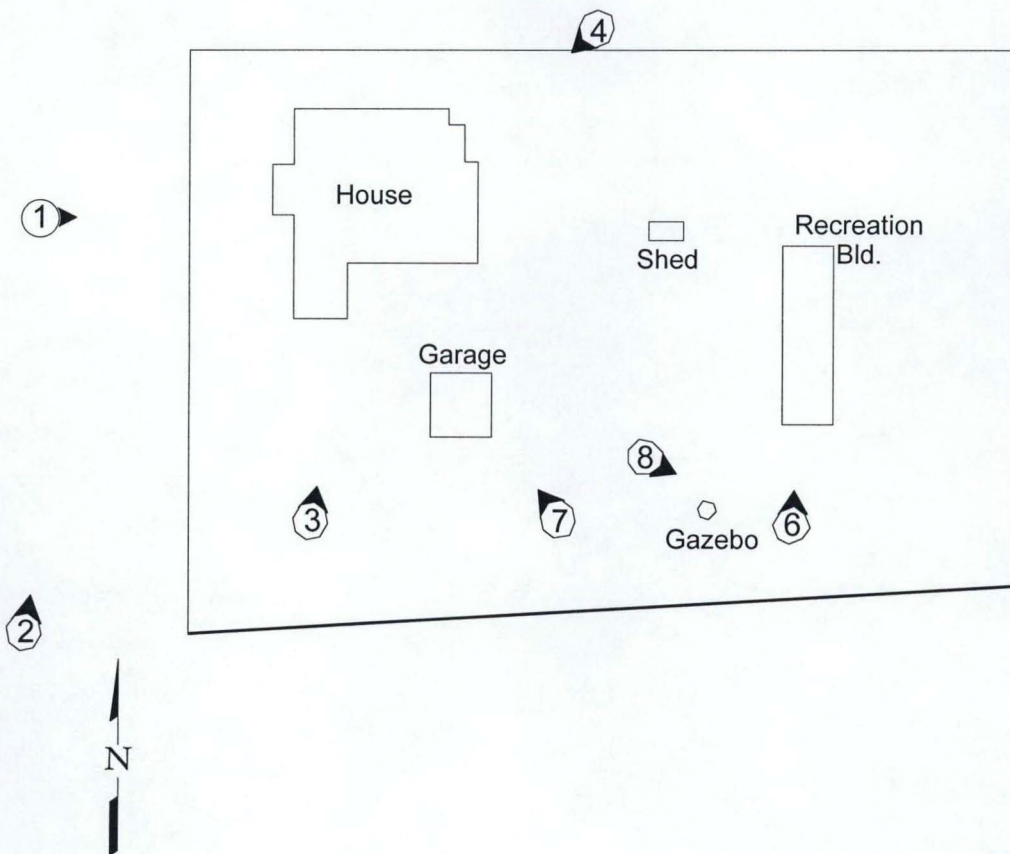
Accompanying Documentation, Continuation Sheet #3

Section number _____ Page _____

Davis C. Cooper House
Calhoun County, AL

Siteplan

Sketch Plan, Not to Scale



United States Department of the Interior
National Park Service

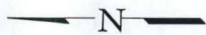
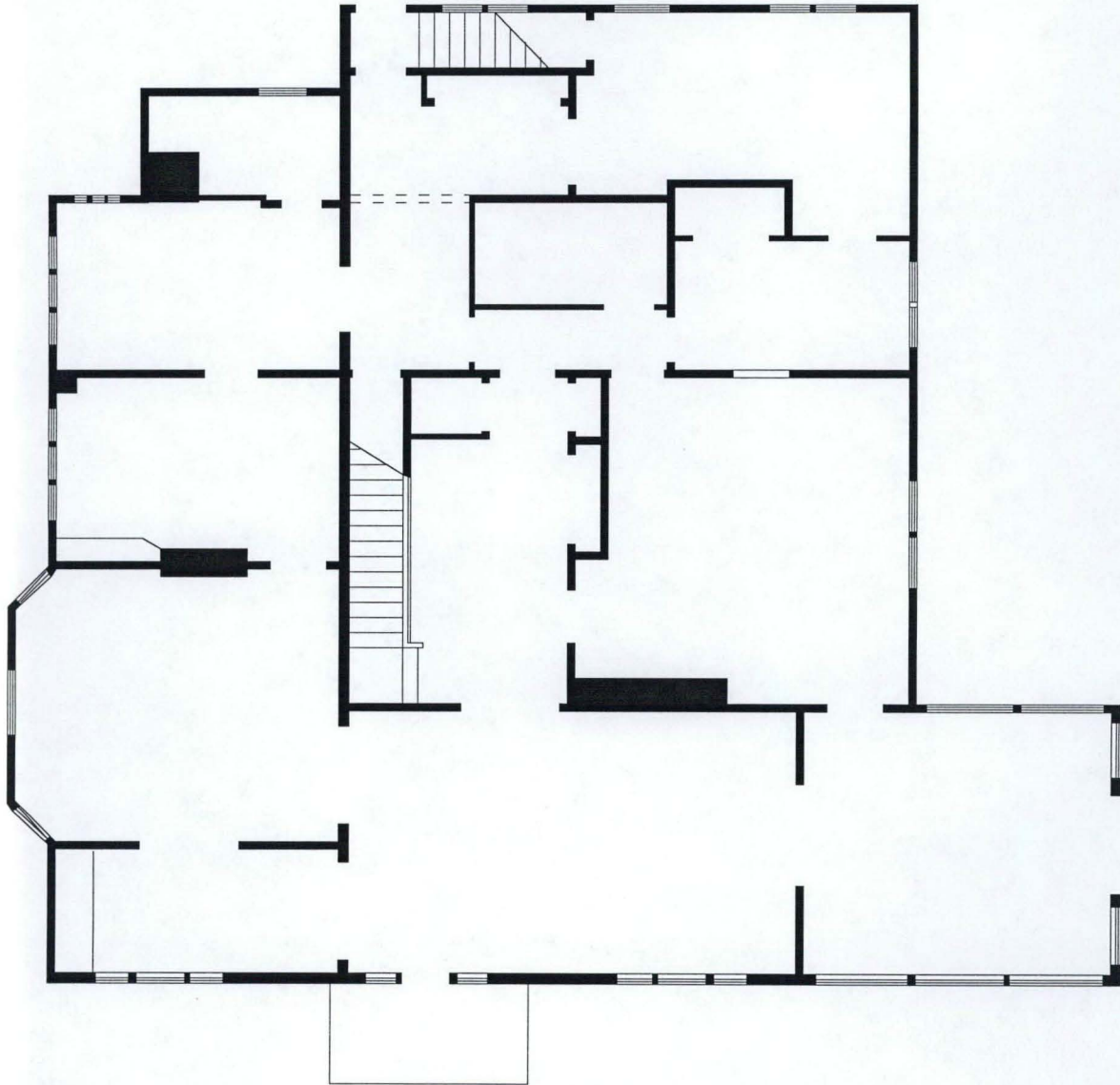
National Register of Historic Places Continuation Sheet

Accompanying Documentation, Continuation Sheet #4

Section number _____ Page _____

Davis C. Cooper House
Calhoun County, AL

First Floor Plan Sketch Plan, Not to Scale



United States Department of the Interior
National Park Service

National Register of Historic Places Continuation Sheet

Accompanying Documentation, Continuation Sheet #5

Section number ____ Page ____

Davis C. Cooper House
Calhoun County, AL

Second Floor Plan

Sketch Plan, Not to Scale

