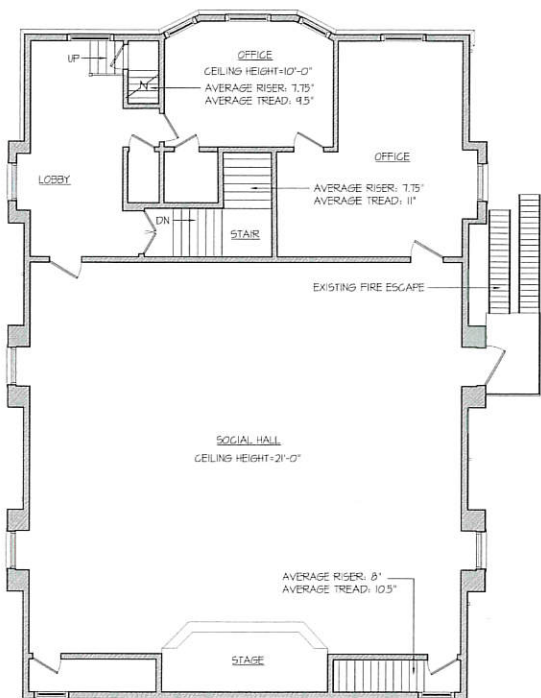
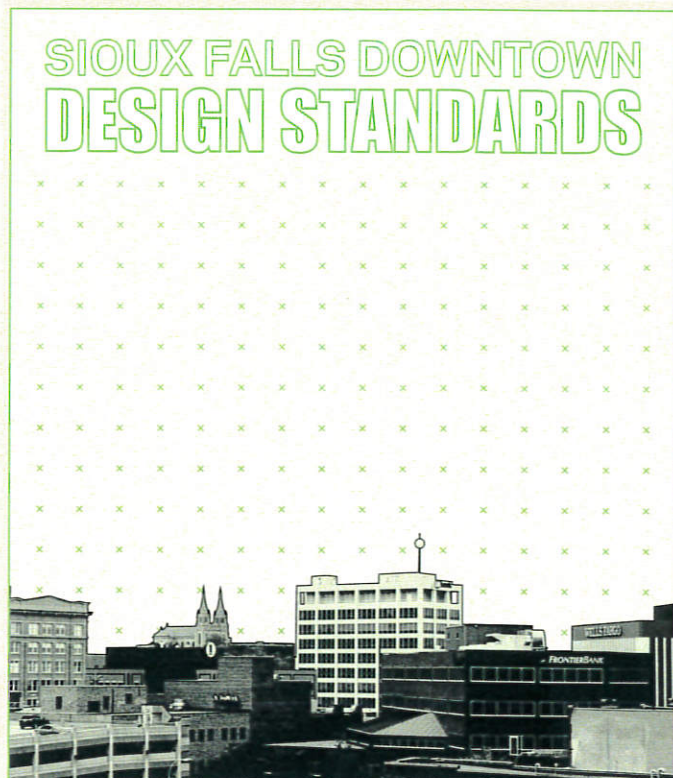




# Integrated Resource Management Applications



Existing Second Floor Plan



Left: Excerpt from Historic Structure Report for Odd Fellows Hall in East Providence, Rhode Island.  
Right: Cover of *Sioux Falls Downtown Design Standards* from the South Dakota State Historical Society.

## The National Park Service's Integrated Resource Management Applications (IRMA) Portal provides partners and the public with easy access to resource management documents.

IRMA stores grant products that have been submitted to the State, Tribal, Local, Plans & Grants Division as part of the reporting process for Historic Preservation Fund grants. Products include design guidelines, economic impact surveys, historic structure reports, and preservation plans. Restricted information is not available.

### What can I do on IRMA?

- Find products from Historic Preservation Fund grants, digitized and easily searchable.
- Share product examples from preservation projects.
- Search over 1000 product examples from other states and communities.

### How do I use IRMA?

- Go to [go.nps.gov/HPF\\_IRMA](http://go.nps.gov/HPF_IRMA).
- For *Park, Office, Program or Region*, select *Historic Preservation Fund (HPF)*.
- For *Category of Featured Content*, select the type of information you want to see.
- Click *View Report*.

For more information on our other programs, please visit [www.nps.gov/stlpg](http://www.nps.gov/stlpg).